

FIGURE 1. Population structure, by age and sex, Cuba, 2000.

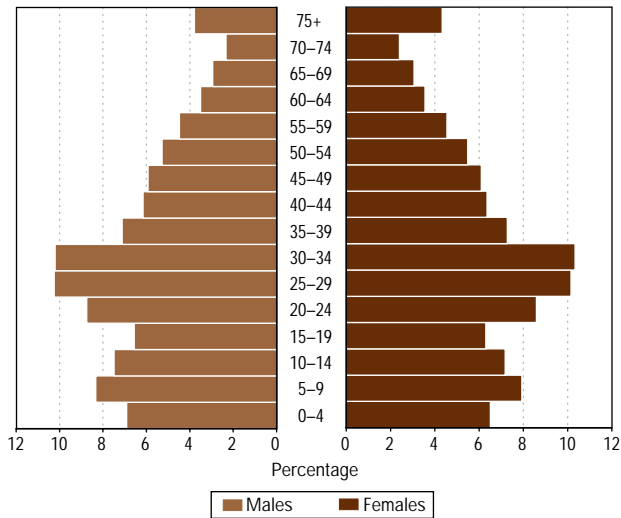


FIGURE 4. Age- and sex-adjusted mortality rates for leading causes of death, Cuba, 1990 and 2000.

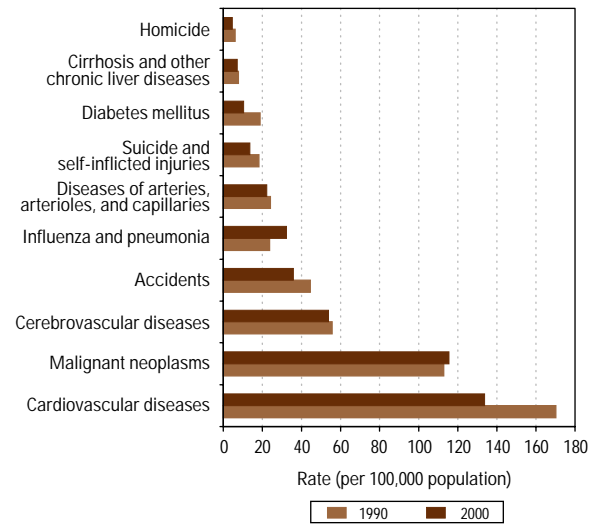


FIGURE 2. Fertility rate, by mother's age, Cuba, 1996 and 2000.

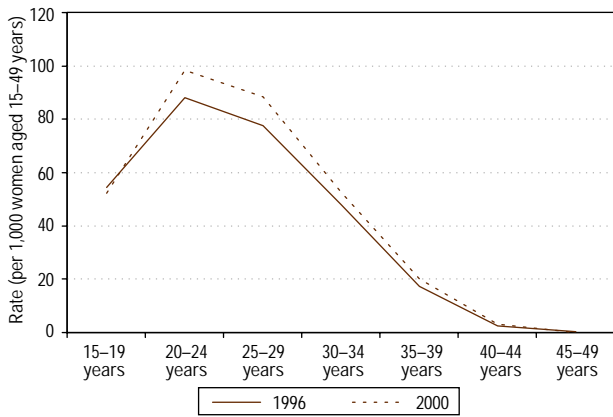


FIGURE 5. Years of potential life lost among persons aged 1-74 years, by leading causes, Cuba, 2000.

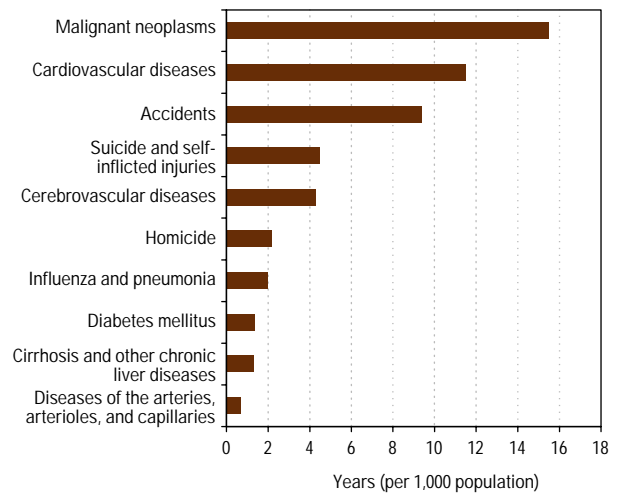


FIGURE 3. Estimated mortality, by broad groups of causes and sex, Cuba, 2000.

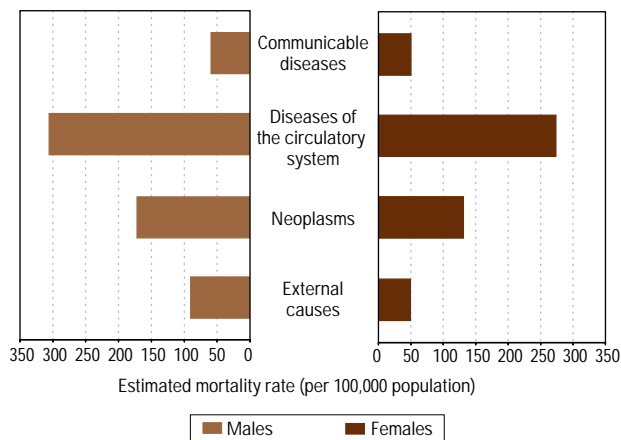


FIGURE 6. Infant mortality, by province, Cuba, 1990 and 2000.

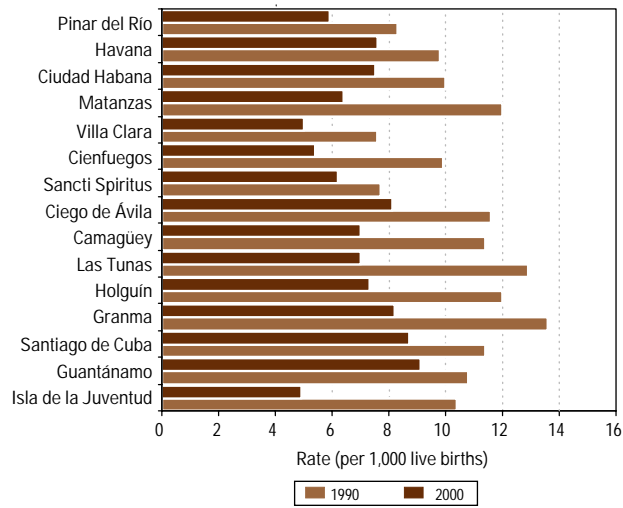


FIGURE 7. Incidence of tuberculosis, Cuba, 1972–2000.

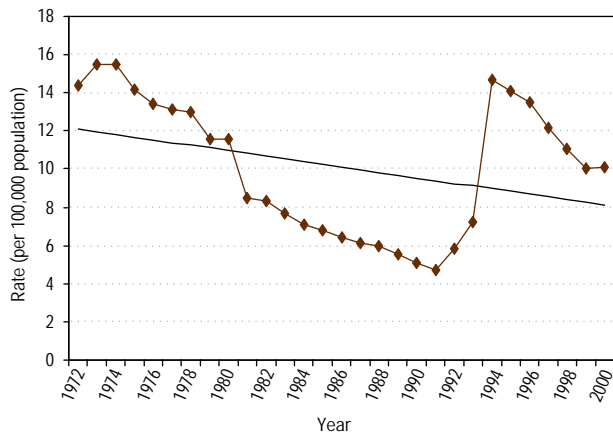


FIGURE 8. AIDS incidence, by sex, with male-female ratio, Cuba, 1990–2000.

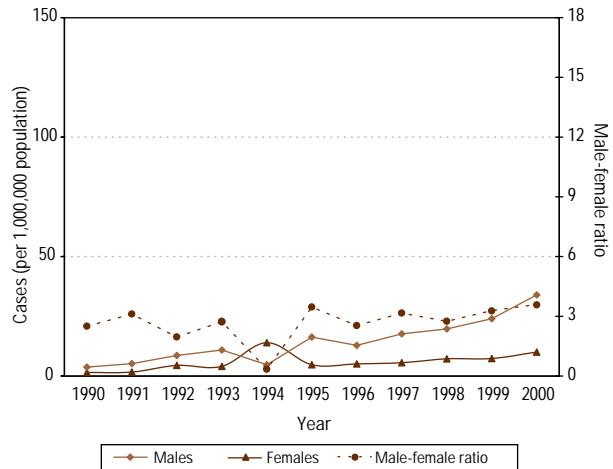


FIGURE 9. Mortality due to cardiovascular diseases, Cuba, 1970–2000.

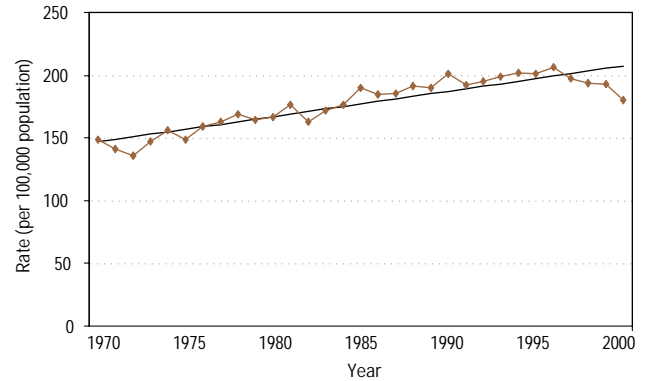


FIGURE 10. Mortality due to malignant neoplasms, Cuba, 1981–2000.

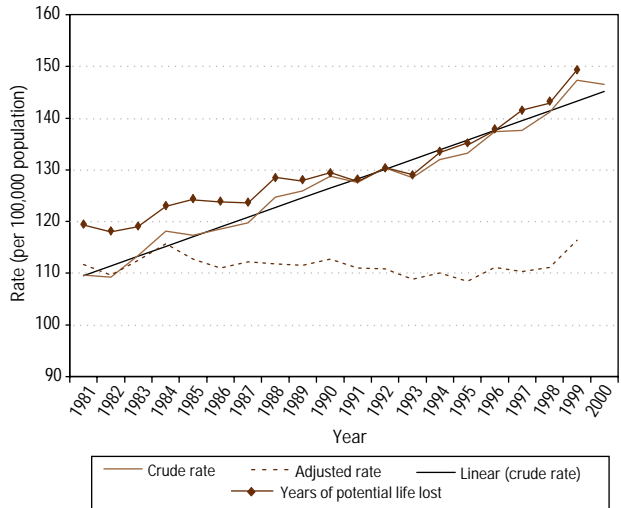


FIGURE 11. Total public health expenditure, Cuba, 1994–2000.

