

RESTORE BELIZE

Mary Vasquez

Experts' Meeting on Strengthening
the Public Health Approach to
Youth Violence in the Americas

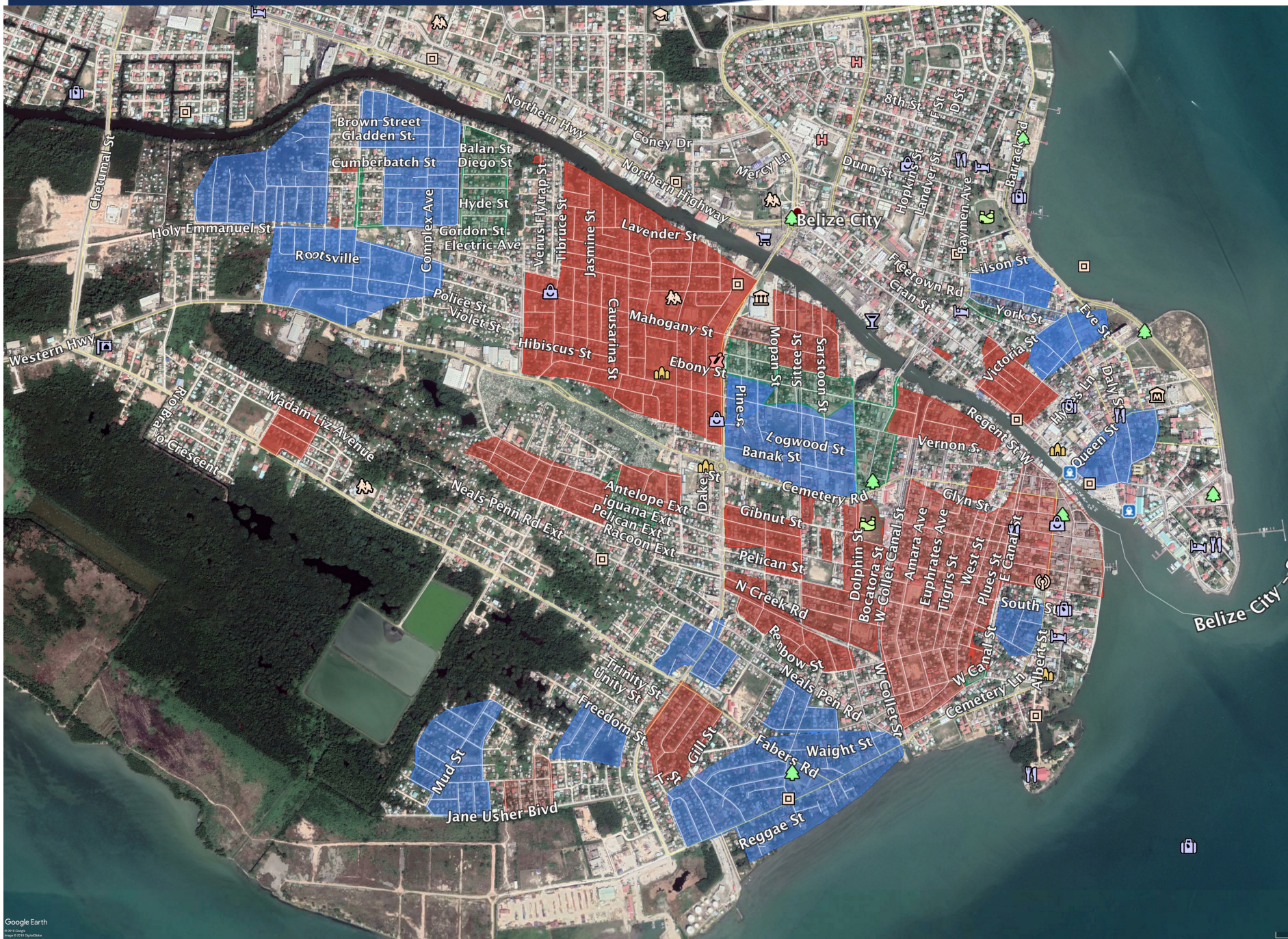
BPD attributes 82.4% of the murders committed in Belize City between 2014 - 2017 to gang-related violence.

Belize is both a Central American and Caribbean nation - situated in two of the most violent sub-regions globally.

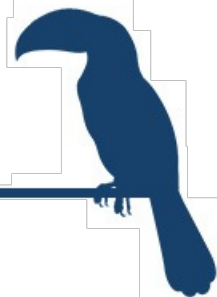
In 2017, Belize's murder rate was 37.2 (142 total murders) making it the 7th highest murder rate in the world, the 3rd highest in Central America and the 3rd highest in the Caribbean.

Google Earth

US Dept of State Geographer
© 2018 Google
© 2018 INEGI
Data SIO, NOAA, U.S. Navy, NGA, GEBCO



Lessons Learned



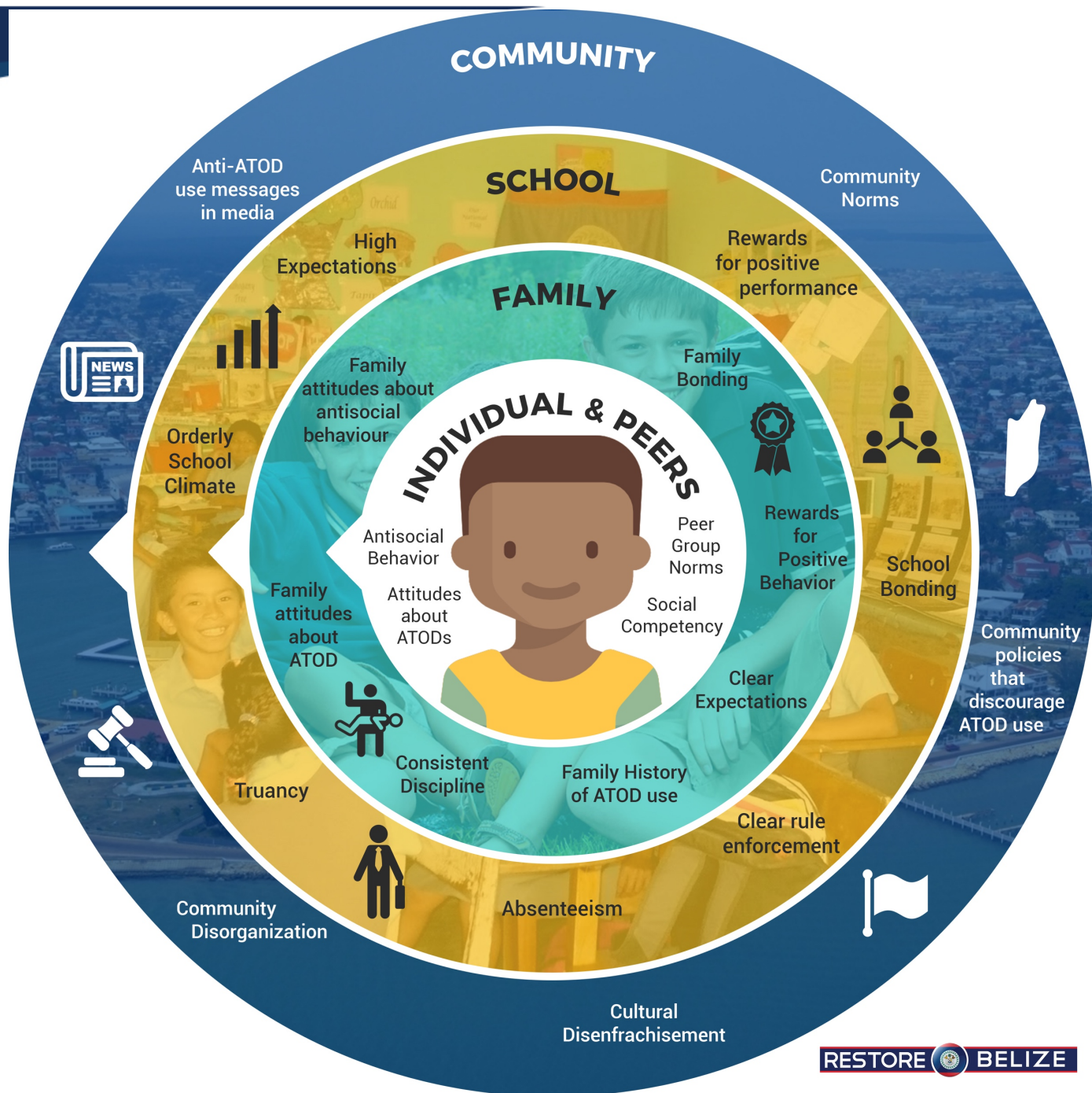
1

Complex Trauma

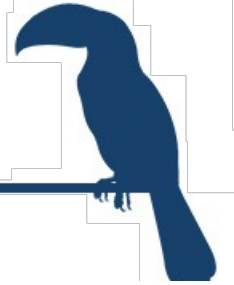
2

**Gang crime is a
“wicked problem”**

Bronfenbrenner's Human Ecological Framework



Harsh Human Ecology



Adult with HIV



Low
Literacy



Parents unable to
Read/Write



Poor
Performance



Poor Nutrition



Child with Rash



Constantly Ill



Crowded Homes



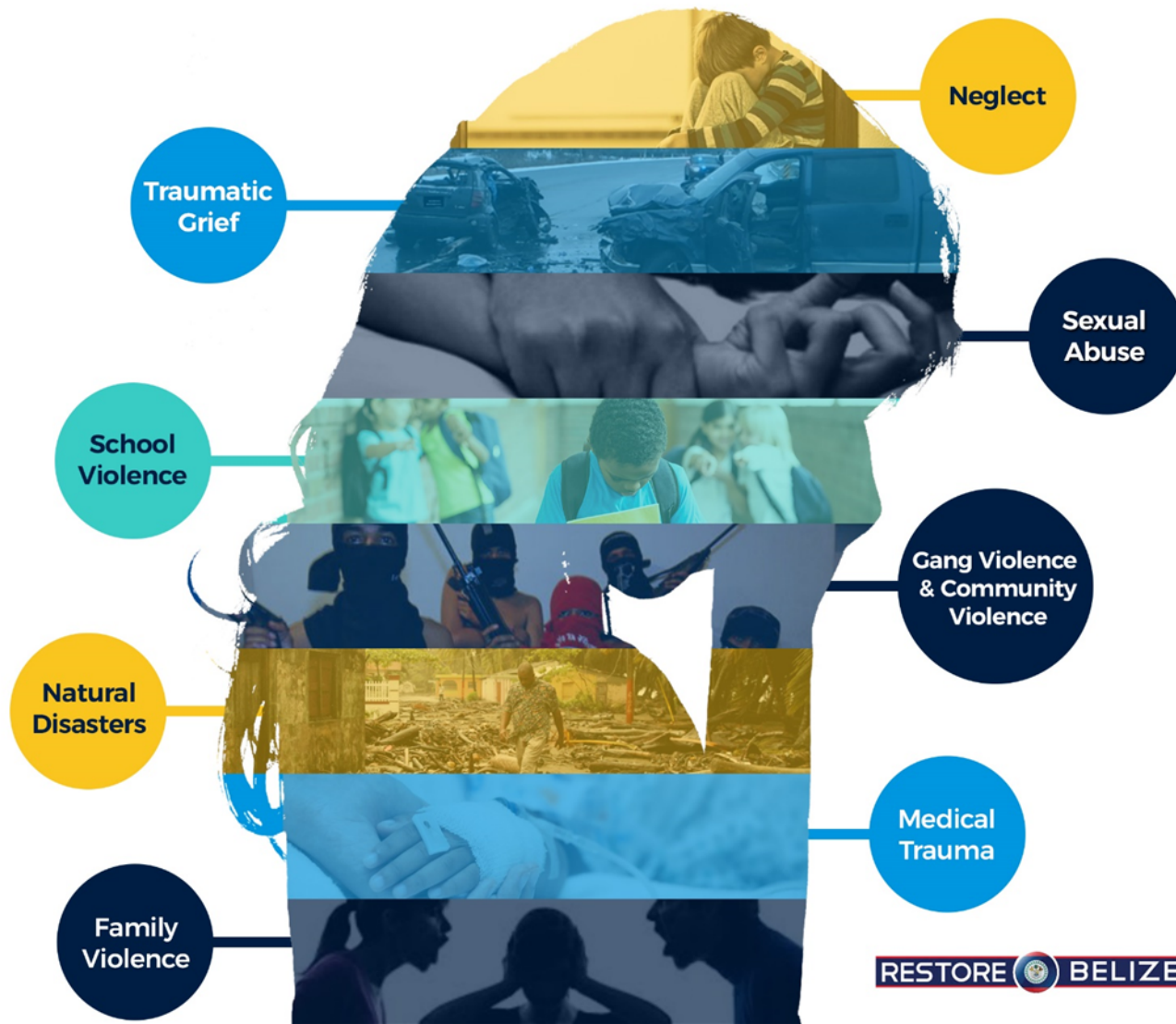
Poor Sanitation



Chronic
Illness

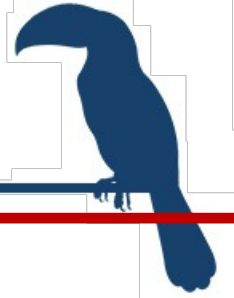


Complex Trauma



THE METAMORPHOSIS PROGRAMME

– BUILDING RESILIENCY IN BOYS AT HIGH RISK OF GANG RECRUITMENT



OBJECTIVES

- ☐ Foster resiliency by promoting protective factors to mitigate risk in their daily lives.
- ☐ Provide parents with knowledge and skills they need to become effective parents.
- ☐ Build capacity in schools to reinforce protective factors

DESIGN

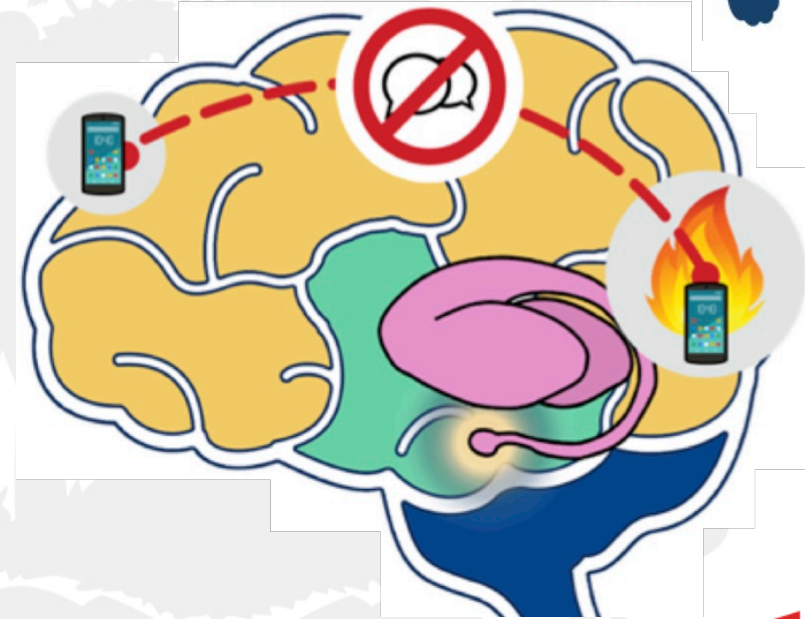
Multiple protective factors

- ☐ Individual counselling
- ☐ Psychiatric & medical referrals
- ☐ Remedial academic classes
- ☐ Mentorship
- ☐ Extracurricular activities
- ☐ Social work support for families
- ☐ School Liaison
- ☐ Social support network

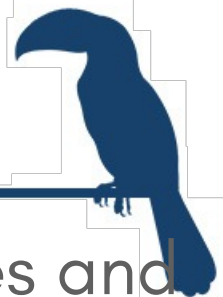
How Trauma Affects the Brain



- Smaller brain size and structures
- Fewer neural connections
- Heightened baseline level of arousal
- Difficulties with learning, memory, and emotional regulation
- Difficulty trusting others and forming healthy relationships
- Increased behavioural issues
- Increased risk for mental health issues
- Lower self-esteem
- Focus on survival vs. future orientation



Lifelong Impact of Complex Trauma



Literature

- 100's of studies have found that the more exposure a child has to adverse childhood experiences (ACEs), the higher the child's risk for poor educational, social, health, and economic outcomes in childhood and adulthood
- "Positive experiences and supportive relationships provide the buffering that allows children to withstand, or recover, from adverse experiences."

Sege, R., et al. (2017) Balancing Adverse Childhood Experiences with HOPE (Health Outcomes of Positive Experience): New Insights into the Role of Positive Experience on Child and Family Development, Casey Family Programs.

Trauma Informed Care



Commitment to Trauma Awareness and Practice

Understanding the Impact of Violence



Implemented through policies, procedures and practices



Create a safe environment:

- Physical safety
- Trustworthiness
- Clear and consistent boundaries
- Transparency
- Predictability

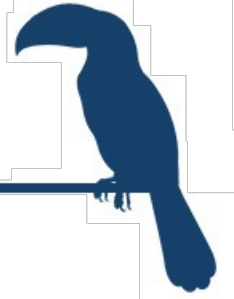
Build relationships and connectedness:

- Respect
- Compassion
- Acceptance and non-judgment
- Mutuality
- Collaboration
- Peaceful coexistence

Empower citizens:

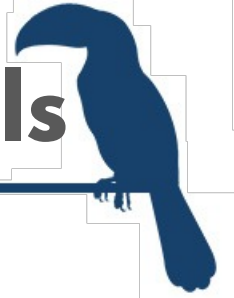
- Build Self-esteem
- Choice
- Strengths perspective
- Skill building

Quality Child Friendly Schools



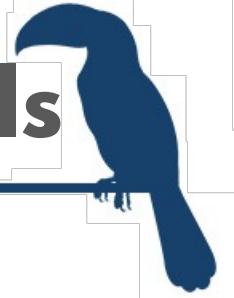
- School Governance and Identity
- Effective Leadership
- Teacher Competence and Commitment
- Delivery of the Curriculum
- School – Community Relationships
- Quality Assurance
- Safe, Healthy and Supportive Learning Community
 - Nutrition, Counselling, Trauma Informed Practice, Risk Identification and Intervention, Conflict Mediation

Trauma Informed Practice in Schools



- Understanding Impact of Armed Violence on Children
- Impact of Trauma on Child & Adolescent Development
- Impact of Trauma on Learning & School Performance
- Impact of Family Violence on Children &
- Understanding Grief & Loss
- Classroom & School-Based Interventions
- Early Identification of Students at Risks

Trauma-informed Practice in Schools



- Summer training (40-hour) in TIPS
- Purposeful dialogues & strategic planning with school leadership for Quality Child Friendly Schools
- Counselling for children and teachers
- On-going technical support and training throughout the school year
 - Classroom observation and feedback to teachers and school administrators
 - 4 hours of training courses per month
 - On-going hands-on coaching
- School feeding programme (ideally)

Challenges



- All services to violent, traumatized communities need to be trauma-sensitive, including police.
- Caregivers are also traumatized and so need healing from trauma
- Cultural beliefs do not support children's rights – traditionally punitive, religious constraints, belief that violence, etc.
- Stigma relating to mental health care
- Extreme scarcity of mental health professionals – qualified counselors, psychiatrists, psychiatric nurses



Children at St. John's Anglican practicing mindfulness

Policy and Practical Implications



- Transgenerational transmission of violent behavior and trauma -> violence epidemic is deep and wide
- No single type of violence can successfully be addressed in isolation – structural, family, sexual, institutional
- Gang-violence is a complex problem which requires new types of governance, a coordinated multisectoral approach, different approach to problem solving
- Need to re-focus governmental investments into violence prevention rather than suppression
- Need to integrate policies and programmes in security, education, health and social support

THANK YOU